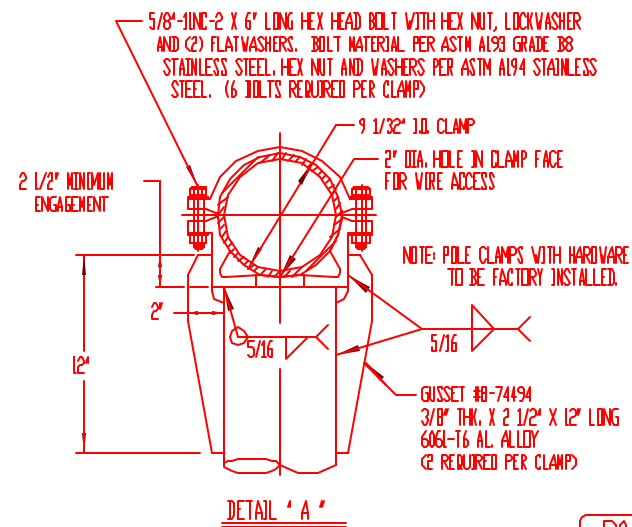
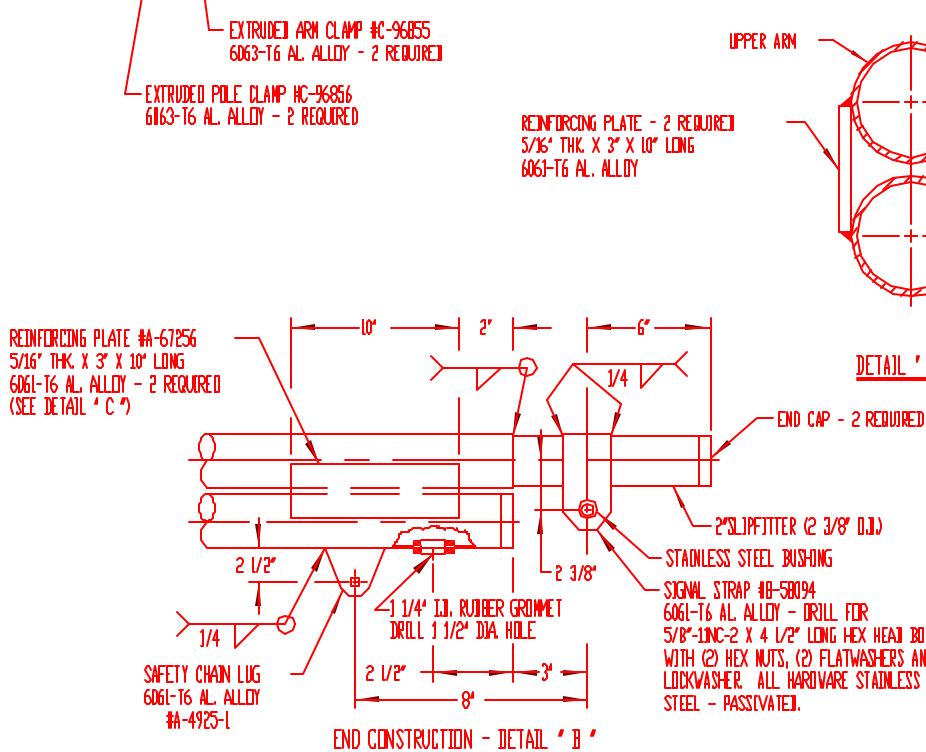


NOTE:
1.- USE 4043 WELD WIRE.
2.- 6063 ASSEMBLY .375 WALL OR LESS TO BE HEAT-TREATED TO T6 TEMPER AFTER WELDING



P&K

REV	DESCRIPTION	DATE	BY	CHK	MATERIAL	P&K POLE PRODUCTS, INC. 84 Foundry St., Newark, N.J.	
						ONE 30 FT. MAST ARM ASSEMBLY MA3060890-10	
						BY K.M.	07-21-83
						BY W.W.V.	07-21-83
						SCALE	NONE
NEW JERSEY DEPT. OF TRANSPORTATION						G-82740	